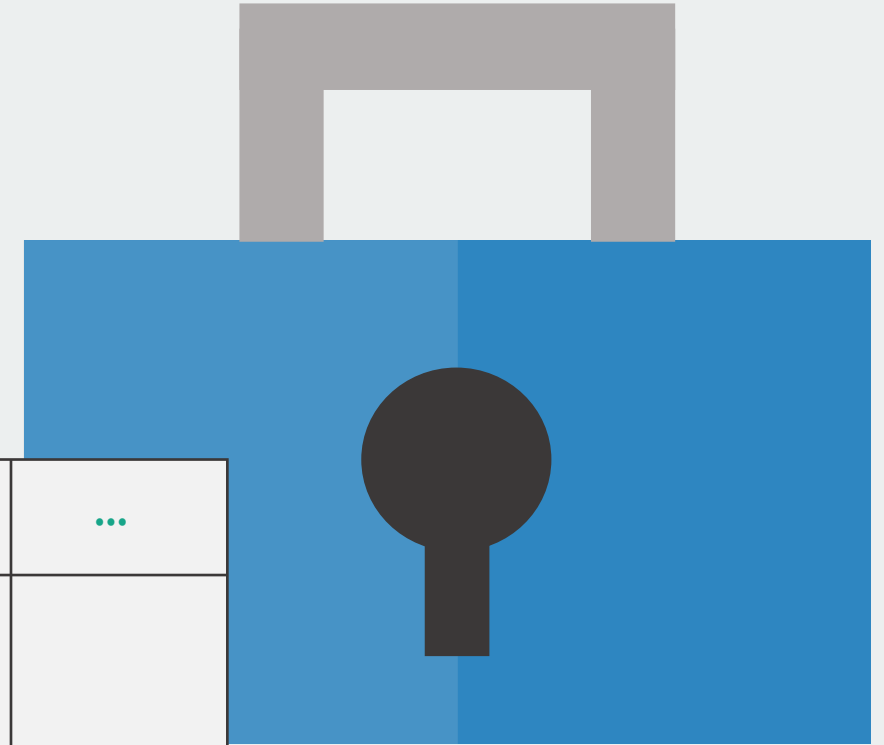


Archival Data Entry, Data Tools, and the DSDU

x	y	z	...



Tyson S. Barrett, PhD
Data Science & Discovery Unit
Emma Eccles College of Education and Human Services

Remember these??

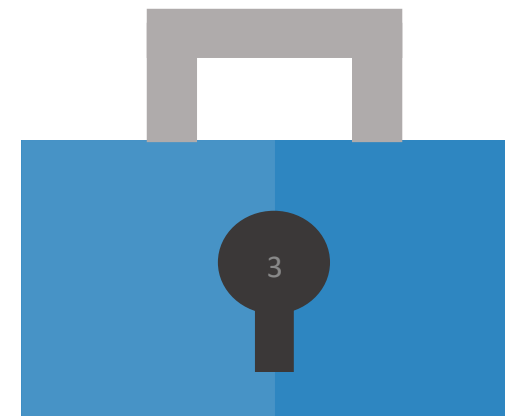


1

The DSDU

2

**Archival Data
Entry**

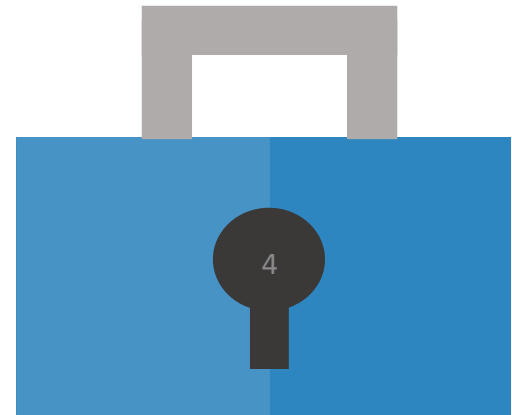


1

The DSDU

2

Archival Data Entry

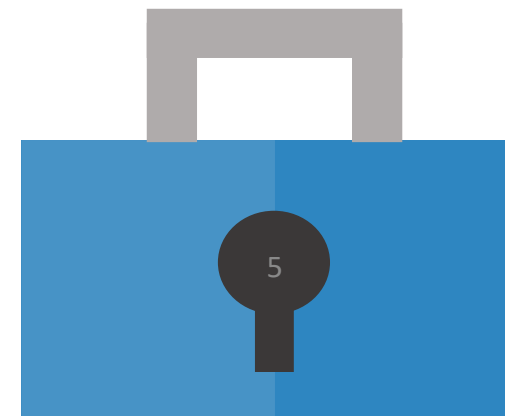


1

The DSDU

2

**Archival Data
Entry**



Secure Tools



Some tools are secure when used correctly:

box



Insecure Tools



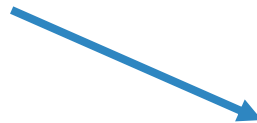
Other tools are not qualified to house PHI unless you have a special agreement:



Insecure Tools



Other tools are not qualified to house PHI unless you have a special agreement:

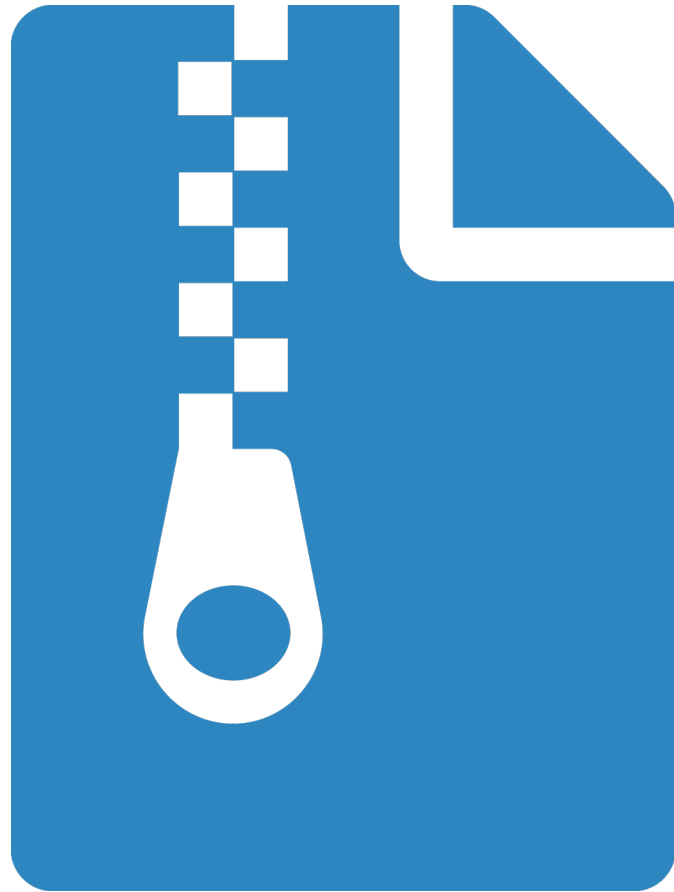


HIPAA AND HITECH

“Qualtrics provides general research software and other services where all data are processed equally, without regard to how a Customer might classify their data. As such, Qualtrics cannot declare or represent any data entered into its services. Any processing of specific data types is purely incidental, and not required to use the services.

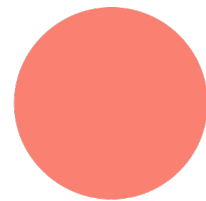
“HITECH (Health Information Technology for Economic and Clinical Health Act) updated HIPAA rules to ensure that data are properly protected and best security practices followed. Qualtrics safeguards all Customer data and uses secure data centers to ensure the highest protection as per HITECH requirements.”





**DSDU, upon
request, can
enter archival
data into a
secure database**

**Request link
will be on the
DSDU's website
in the next few
weeks**



More Information:

 cehs.usu.edu/research/dsdu

 tyson.barrett@usu.edu

